

**INSTRUCTION MANUAL**  
**HYDRAULIC TABLE TRUCK**



**Model: TF 75/TF100**

# TF 75/100 Hydraulic Table Truck (Cable Release 2)

## I. Use & applicable range

It is a convertible vehicle using for lifting and transporting in workshop, warehouse and wharf, etc.

## II. Basic Data:

Model	TF 75	TF 100
Load Capacity	750kgs	1000kgs
Lift Height	1000mm	1000mm
Lowest Height	410mm	410mm
Table Dimensions	1000×513×55mm	1000×513×55mm
Packing Dimensions	1160×620×430mm	1160×620×430mm
Net Weight	115kgs	117kgs

## III. Installing

1. Install the handle (#14) on the frame seat (#22), and fix them by two M12 bolts.
2. Insert the foot pedal rod (#82) into the hole of the foot pedal holder (#78), and fix them by M8 bolt.
3. Insert the brake thread (#21) into the press bolt (#64), and fix them by M8 nut.

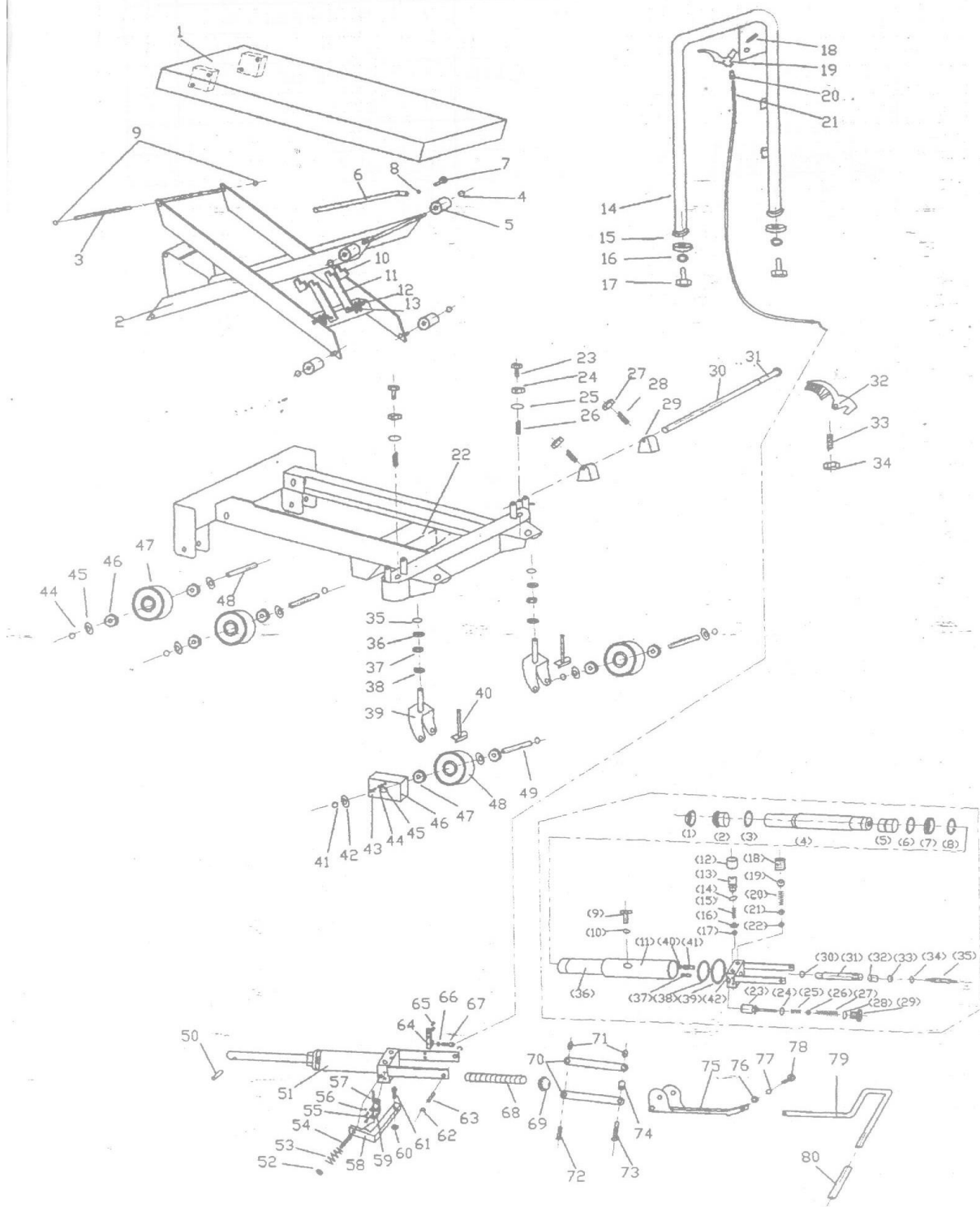
## IV. Using

1. Test the cart before using it. Firstly step the foot pedal rod to lift the table to the max height, and then release the limit oil valve to check whether the cart is ok.
2. Please fix the cart and to brake the wheel before loading.
3. Adjust the table's height by step the foot pedal lift up and down to load or unloading in its rated loading.
4. When lower the table, draw up the handle.

## V. Warning

- (1) Operate strictly according to the instruction manual.
- (2) Do not use the cart on slop.
- (3) Do not allow people to sit or ride on the cart.
- (4) Keep feet and hand away from under the lowering table. Suggest to wear safety shoes during operation.
- (5) Do not transport the loads during the raising process.
- (6) Do not random regulate the safety valve.
- (7) The maintenance is to be performed by the professional person
- (8) Failure to operate the cart will cause the damage to the person health or property loss.
- (9) The cart must used in the rated capacity, it is not permit to load the heavy goods that the rated capacity of the cart.

# Hand-hydraulic Table Truck



**TF 75/100 Hydraulic Table Truck  
(Cable Release 2)**

No.	Description	Q'ty	No.	Description	Q'ty	No.	Description	Q'ty
1	Table	1	44	C-ring	2	[3]	O-ring	1
2	Link Assembly	1	45	Dust Cover	8	[4]	Lift Piston	1
3	Up Link Shaft	1	46	Semicircle Screw	2*	[5]	Piston	1
4	C-ring	4	47	Spring Washer	2*	[6]	O-ring	1
5	Roller Guide	4	48	Flat Washer	2*	[7]	Oil Seal	1
6	Down Link Shaft	1	49	Protect Cover	2*	[8]	C-ring	1
7	Hex Cap Bolt	1	50	Bearing	8	[9]	Hex Cap Plug	1
8	Spring Washer	1	51	Wheel	4	[10]	O-ring	1
9	C-ring	2	52	Shaft	4	[11]	Outer Cylinder Body	1
10	Rubber Cover	2*	53	Spring Pin	1	[12]	Adjust Pressure Cover	1
11	Support Rod	2*	54	Cylinder	1	[13]	Adjust Pressure Screw	1
12	Hex Cap Bolt	2*	55	Hex Cap Nut	1	[14]	O-ring	1
13	Hex Cap Nut	2*	56	Spring	1	[15]	Adjust Pressure Spring	1
14	Handle	1	57	Set Screw	1	[16]	Spring Seat	1
15	Big Washer	2	58	Hex Cap Screw	2	[17]	Steel Ball	1
16	Spring Washer	2	59	Spring Washer	2	[18]	Hex Cap Bolt	1
17	Hex Cap Bolt	2	60	Spring Pin	1	[19]	Steel Ball	1
18	Spring Pin	1	61	Draw Board	1	[20]	Taper Spring	1
19	Brake Handle	1	62	Support Holder	1	[21]	Steel Ball	1
20	Set Position Cover	1	63	Hex Cap Nut	1	[22]	Steel Ball	1
21	Brake Thread	1	64	Pressure Thread Screw	1	[23]	Top Rod	1
22	Frame Seat	1	65	C-ring	2	[24]	O-ring	1
23	Hex Cap Bolt	2	66	Joint Shaft	1	[25]	Spring	1
24	Hex Cap Nut	2	67	Support Rod	1	[26]	Steel Ball	1
25	Flat Washer	2	68	Hex Cap Bolt	2	[27]	Spring	1
26	Spring Washer	2	69	Hex Cap Nut	1	[28]	O-ring	1
27	Hex Cap Nut	2	70	Copper Joint Slice	1	[29]	Hex Cap Plug	1
28	Hex Cap Screw	2	71	Big Spring	1	[30]	O-ring	1
29	Cam	2	72	Spring Seat	1	[31]	Pump Cylinder	1
30	Brake Shaft	1	73	Link Slice	2	[32]	O-ring	1
31	Bushing	1	74	Lock Pin	2	[33]	Dust Cover	1
32	Brake Foot Pedal	1	75	Shaft	1	[34]	Oil Seal	1
33	Hex Cap Screw	1	76	Shaft	1	[35]	Small Lift Piston	1
34	Hex Cap Nut	1	77	Separate Cover	1	[36]	Inter Cylinder Body	1
35	Big Washer	2	78	Foot Pedal Holder	1	[37]	Filter	1
36	Spring Washer	2	79	Flat Washer	1	[38]	Washer (1)	1.
37	Hex Cap Bolt	2	80	Spring Washer	1	[39]	Washer (2)	1
38	Nut	4	81	Hex Cap Bolt	1	[40]	O-ring	1
39	Bearing	2	82	Foot Pedal Rod	1	[41]	Lowering Valve	1
40	Bushing	2	83	Foot Pedal Cover	1	[42]	Valve	1
41	Taper Bearing	2						
42	Swivel Wheel Holder	2	[1]	Dust Cover	1	Remark: the parts with "*" is only CE type use.		
43	Brake Rod	2	[2]	Top Nut	1			